



Frog Month Victoria – October 2024

Summary report

Professor Kirsten Parris

School of BioSciences, The University of Melbourne, Parkville VIC 3052, Australia.



A Growling Grass Frog, *Litoria raniformis* (Credit: North Central CMA)

Executive Summary

Frog Month Victoria is a collaborative initiative between the Catchment Management Authorities (CMAs) of Victoria, Melbourne Water and the University of Melbourne. Building on Melbourne Water's successful Frog Census program, Frog Month Victoria seeks to engage citizen scientists with nature in their neighbourhood across the whole state of Victoria through the recording of frog calls using Melbourne Water's Frog Census App. The app allows participants to upload photos as well as call recordings. Frog Month Victoria is providing CMAs with a specialised frog-monitoring program to serve both their volunteers and the scientific community, led by the state's EstuaryWatch and WaterWatch programs.

The first Frog Month Victoria ran in October 2024, with a focus on two feature species: the threatened Growling Grass Frog *Litoria raniformis* and the introduced Eastern Dwarf Tree Frog *Litoria fallax* from Queensland and New South Wales. However, participants were encouraged to record any frogs they heard calling, and also to record at wetlands where no frogs were heard (contributing absence records). Almost 300 participants submitted 638 call recordings, which yielded a total of 1,183 frog records. These 638 recordings included 45 recordings with no detectable frog calls. Eleven species of frogs (including the two feature species) were detected from call recordings, with one additional species identified from a submitted photo. The Growling Grass Frog was detected in the Melbourne Water region and the Corangamite CMA, while the Eastern Dwarf Tree Frog was recorded in the Melbourne Water region and the North East CMA.

For future iterations of Frog Month, I recommend earlier and more targeted engagement with each CMA in Victoria to build momentum and enthusiasm amongst prospective participants. This could include CMA-specific communications focused on the different species present in each CMA region and their sounds, activity patterns and conservation status.



An Eastern Dwarf Tree Frog *Litoria fallax* (Credit: Eyeweek via Flickr)

Statewide Findings

Across October 2024, 298 people participated in Frog Month Victoria, submitting 638 call recordings that yielded a total of 1,183 confirmed frog records; 45 recordings contained no detectable frog calls. Eleven species of frogs, including the feature species *Litoria raniformis* and *Litoria fallax*, were detected from the call recordings (Tables 1–3; Fig. 1). The most frequently detected species were the Eastern Common Froglet, Eastern Banjo Frog, Spotted Marsh Frog, Striped Marsh Frog and Eastern Sign-Bearing Froglet (Table 1).

Perhaps not surprisingly, engagement was uneven across the state (Fig. 2): the greatest number of records were submitted by citizen scientists in the Melbourne Water region, where the human population is highest and where there was a pre-existing group of committed participants from Melbourne Water’s Frog Census Program. This was followed by the Corangamite Catchment Management Authority (CMA) and the North Central CMA. However, at least one recording was submitted from every CMA in Victoria.

Species	Common name	Number of records
<i>Limnodynastes dumerilii</i>	Eastern Banjo Frog	188
<i>Crinia signifera</i>	Eastern Common Froglet	364
<i>Litoria fallax</i>	Eastern Dwarf Tree Frog	4
<i>Crinia parinsignifera</i>	Eastern Sign-bearing Froglet	42
<i>Litoria raniformis</i>	Growling Grass Frog	36
<i>Litoria peronii</i>	Peron's Tree Frog	32
<i>Paracrinia haswelli</i>	Red-groined Froglet	1
<i>Litoria ewingii</i>	Southern Brown Tree Frog	163
<i>Limnodynastes tasmaniensis</i>	Spotted Marsh Frog	179
<i>Limnodynastes peronii</i>	Striped Marsh Frog	154
<i>Litoria verreauxii</i>	Whistling Tree Frog	20
Grand Total		1,183

Table 1. Frog records submitted across Victoria during Frog Month Spring, October 2024.

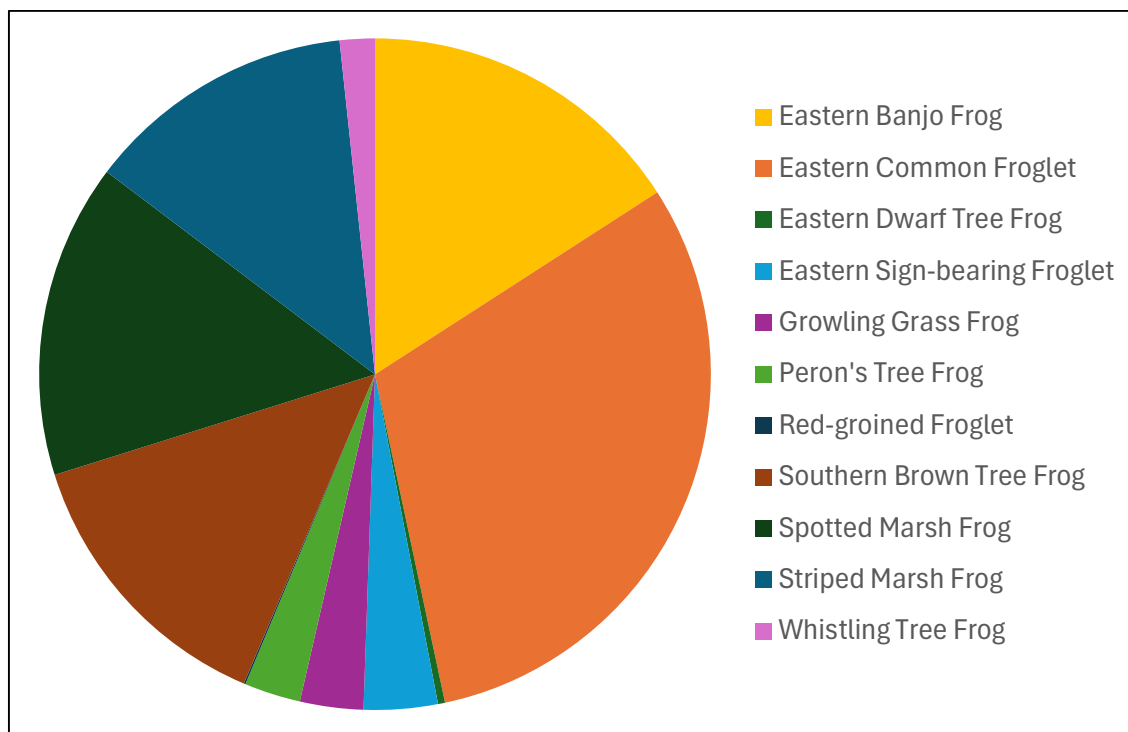


Figure 1. Graphical representation of the frog records submitted across Victoria during Frog Month Spring, October 2024.

Feature Species

Our two feature species for Frog Month – Spring were each detected in two CMA regions: the Growling Grass Frog in the Melbourne Water and Corangamite CMAs, and the Eastern Dwarf Tree Frog in the Melbourne Water and North East CMAs (Fig. 3). Northern Melbourne, Western Melbourne and the Portarlington area on the Bellarine Peninsula yielded the most records of the Growling Grass Frog, while the introduced Eastern Dwarf Tree Frog was recorded at Lilydale, Yarra Flats (Melbourne Water CMA), and Ryan’s Lagoon Nature Conservation Reserve, east of Wodonga (North East CMA).

Engagement

Engagement with the program was very promising for the inaugural Frog Month. The 638 call recordings submitted in October 2024 compared favourably with numbers from previous years, when the Melbourne Water Frog Census App was only accepting records from the Greater Melbourne region. For example, there were 133 recordings submitted in October 2023 and 411 in October 2022. Some CMA areas obviously embraced Frog Month more than others, but this first iteration of the program can act as a baseline from which to build engagement over future Frog Months. We also had strong engagement with prospective participants at the Program Launch webinar on September 24, and via various social-media channels throughout the month of October.

CMA	Species detected
Corangamite	9
East Gippsland	7
Glenelg Hopkins	1
Goulburn Broken	8
Mallee	6
Melbourne Water	10
North Central	7
North East	8
West Gippsland	6
Wimmera	3

Table 2. Number of frog species detected in each Victorian CMA during Frog Month Spring, October 2024.

Summary Data – October 2024	
No. of people who surveyed	298
No. of surveys	638
No. of sites	556
No. of frog records	1,183
No. of species detected	11
No. of threatened species	1

Table 3. Summary data for participation in Frog Month – Spring, October 2024.

Findings by Region

Mallee CMA

Frog enthusiasts in the Mallee CMA submitted a total of 17 records of 6 frog species during Frog Month Spring, October 2024 (Table 4; Fig. 4). The most commonly detected species were the Spotted Marsh Frog and the Eastern Banjo Frog.

Species	Common name	Number of records
<i>Limnodynastes dumerilii</i>	Eastern Banjo Frog	4
<i>Crinia signifera</i>	Eastern Common Froglet	1
<i>Crinia parinsignifera</i>	Eastern Sign-bearing Froglet	1
<i>Litoria peronii</i>	Peron's Tree Frog	1
<i>Limnodynastes tasmaniensis</i>	Spotted Marsh Frog	8
<i>Limnodynastes peronii</i>	Striped Marsh Frog	2
Total		17

Table 4. Frog records submitted from the Mallee CMA during Frog Month Spring, October 2024.

Wimmera CMA

Three frog species were detected in the Wimmera by a lone citizen scientist, all on a single recording from a private property south-east of Stawell (Table 5; Fig. 5).

Species	Common name	Number of records
<i>Crinia signifera</i>	Eastern Common Froglet	1
<i>Crinia parinsignifera</i>	Eastern Sign-bearing Froglet	1
<i>Litoria ewingii</i>	Southern Brown Tree Frog	1
Total		3

Table 5. Frog records submitted from the Wimmera CMA during Frog Month Spring, October 2024.

Glenelg Hopkins CMA

One frog fancier in the Glenelg Hopkins CMA submitted a record of the Southern Brown Tree Frog from a location near Dennington (Table 6; Fig. 6).

Species	Common name	Number of records
<i>Litoria ewingii</i>	Southern Brown Tree Frog	1
Total		1

Table 6. Frog records submitted from the Glenelg Hopkins CMA during Frog Month Spring, October 2024.

North Central CMA

Frog friends in the North Central CMA submitted 106 records of seven frog species across the month of October 2024 (Table 7; Fig. 7). The most commonly detected species were the Eastern Common Froglet, Eastern Banjo Frog and the Southern Brown Tree Frog.

Species	Common name	Number of records
<i>Limnodynastes dumerilii</i>	Eastern Banjo Frog	21
<i>Crinia signifera</i>	Eastern Common Froglet	31
<i>Crinia parinsignifera</i>	Eastern Sign-bearing Froglet	15
<i>Litoria peronii</i>	Peron's Tree Frog	2
<i>Litoria ewingii</i>	Southern Brown Tree Frog	19
<i>Limnodynastes tasmaniensis</i>	Spotted Marsh Frog	11
<i>Limnodynastes peronii</i>	Striped Marsh Frog	7
Total		106

Table 7. Frog records submitted from the North Central CMA during Frog Month Spring, October 2024.

Corangamite CMA

Citizen scientists in the Corangamite CMA embraced Frog Month – Spring with gusto, submitting 240 records of 9 species (Table 8; Fig. 8). This included 21 records of the threatened Growling Grass Frog, from rural areas near Colac, Paraparap, Murgheboluc and Freshwater Creek to the urban-adjacent Portarlington Recreation Reserve (Fig. 8).

Species	Common name	Number of records
<i>Limnodynastes dumerilii</i>	Eastern Banjo Frog	43
<i>Crinia signifera</i>	Eastern Common Froglet	75
<i>Crinia parinsignifera</i>	Eastern Sign-bearing Froglet	2
<i>Litoria raniformis</i>	Growling Grass Frog	21
<i>Litoria peronii</i>	Peron's Tree Frog	1
<i>Litoria ewingii</i>	Southern Brown Tree Frog	34
<i>Limnodynastes tasmaniensis</i>	Spotted Marsh Frog	35
<i>Limnodynastes peronii</i>	Striped Marsh Frog	28
<i>Litoria verreauxii</i>	Whistling Tree Frog	1
Total		240

Table 8. Frog records submitted from the Corangamite CMA during Frog Month Spring, October 2024.

Melbourne Water CMA

As noted above, frog devotees in the Melbourne Water region submitted the most records during Frog Month – Spring in October 2024, with 633 records of 10 species (Table 9; Fig. 9). These included records of both feature species. The Eastern Dwarf Tree Frog was recorded at Lilydale Lake in Melbourne’s far east and at the Murrup Brarn Yarra Flats Billabongs in the Yarra Valley (Figs 3 & 9). These are both substantial bodies of water, from which the eradication of this invasive species would be very difficult.

The Growling Grass Frog was detected at The Spit Nature Reserve in the far west of the CMA, at a variety of urban and peri-urban locations in Melbourne’s west and north, and at the Yalukit Willam Reserve in Elsternwick (Fig. 9). This latter location is a surprise, as there have been no known populations of the species nearby for at least 20 years. I understand that the Growling Grass Frogs at Yalukit Willam arrived there via an unauthorised translocation of individuals from the Merri Creek catchment. This is highly problematic, not least because GGF in the Merri catchment are genetically distinct from those in south-eastern Melbourne. Even with the best motives, unauthorised translocations of frogs must be avoided as a conservation tool.

Species	Common name	Number of records
<i>Limnodynastes dumerilii</i>	Eastern Banjo Frog	90
<i>Crinia signifera</i>	Eastern Common Froglet	202
<i>Litoria fallax</i>	Eastern Dwarf Tree Frog	3
<i>Crinia parinsignifera</i>	Eastern Sign-bearing Froglet	8
<i>Litoria raniformis</i>	Growling Grass Frog	15
<i>Litoria peronii</i>	Peron's Tree Frog	20
<i>Litoria ewingii</i>	Southern Brown Tree Frog	83
<i>Limnodynastes tasmaniensis</i>	Spotted Marsh Frog	97
<i>Limnodynastes peronii</i>	Striped Marsh Frog	102
<i>Litoria verreauxii</i>	Whistling Tree Frog	13
Total		633

Table 9. Frog records submitted from the Melbourne Water CMA during Frog Month Spring, October 2024.

North East CMA

Frog fans in the North East CMA submitted 52 records of 8 species, including a record of more than 10 Eastern Dwarf Tree Frogs calling at Ryan’s Lagoon Nature Conservation Reserve east of Wodonga (Table 10; Fig. 10). When full, this lagoon complex forms a substantial body of water that is well connected to other wetlands near the Murray River. And as for the sites where the Eastern Dwarf Tree Frog has become established near Melbourne, eradication of the species from this area would be very difficult.

Species	Common name	Number of records
<i>Limnodynastes dumerilii</i>	Eastern Banjo Frog	10
<i>Crinia signifera</i>	Eastern Common Froglet	17
<i>Litoria fallax</i>	Eastern Dwarf Tree Frog	1
<i>Crinia parinsignifera</i>	Eastern Sign-bearing Froglet	3
<i>Litoria peronii</i>	Peron's Tree Frog	5
<i>Litoria ewingii</i>	Southern Brown Tree Frog	2
<i>Limnodynastes tasmaniensis</i>	Spotted Marsh Frog	11
<i>Limnodynastes peronii</i>	Striped Marsh Frog	3
Total		52

Table 10. Frog records submitted from the North East CMA during Frog Month Spring, October 2024.

Goulburn Broken CMA

Frog watchers in the Goulburn Broken CMA submitted 77 records of 8 frog species throughout Frog Month – Spring (Table 11; Fig. 11). These were from a mixture of rural locations and regional towns (e.g., Alexandra, Benalla and Kyabram).

Species	Common name	Number of records
<i>Limnodynastes dumerilii</i>	Eastern Banjo Frog	17
<i>Crinia signifera</i>	Eastern Common Froglet	22
<i>Crinia parinsignifera</i>	Eastern Sign-bearing Froglet	12
<i>Litoria peronii</i>	Peron's Tree Frog	2
<i>Litoria ewingii</i>	Southern Brown Tree Frog	10
<i>Limnodynastes tasmaniensis</i>	Spotted Marsh Frog	9
<i>Limnodynastes peronii</i>	Striped Marsh Frog	2
<i>Litoria verreauxii</i>	Whistling Tree Frog	3
Total		77

Table 11. Frog records submitted from the Goulburn Broken CMA during Frog Month Spring, October 2024.

West Gippsland CMA

Frog listeners in the West Gippsland CMA submitted 43 records of 6 species, with the Eastern Common Froglet, Striped Marsh Frog and Southern Brown Tree Frog the most commonly encountered (Table 12; Fig. 12). The majority of records were from the west of the CMA.

Species	Common name	Number of records
<i>Limnodynastes dumerilii</i>	Eastern Banjo Frog	3
<i>Crinia signifera</i>	Eastern Common Froglet	14
<i>Litoria ewingii</i>	Southern Brown Tree Frog	8
<i>Limnodynastes tasmaniensis</i>	Spotted Marsh Frog	7
<i>Limnodynastes peronii</i>	Striped Marsh Frog	9
<i>Litoria verreauxii</i>	Whistling Tree Frog	2
Total		43

Table 12. Frog records submitted from the West Gippsland CMA during Frog Month Spring, October 2024.

East Gippsland CMA

Froglers in East Gippsland submitted 11 records of 7 species, including the only record of the Red-groined Froglet for the whole of Frog Month – Spring. Most records were from the Bairnsdale region, but with one record of the Southern Brown Tree Frog at Goongerah (population 31) on the western edge of the Errinundra National Park.

Species	Common name	Number of records
<i>Crinia signifera</i>	Eastern Common Froglet	1
<i>Litoria peronii</i>	Peron's Tree Frog	1
<i>Paracrinia haswelli</i>	Red-groined Froglet	1
<i>Litoria ewingii</i>	Southern Brown Tree Frog	5
<i>Limnodynastes tasmaniensis</i>	Spotted Marsh Frog	1
<i>Limnodynastes peronii</i>	Striped Marsh Frog	1
<i>Litoria verreauxii</i>	Whistling Tree Frog	1
Total		11

Table 13. Frog records submitted from the East Gippsland CMA during Frog Month Spring, October 2024.

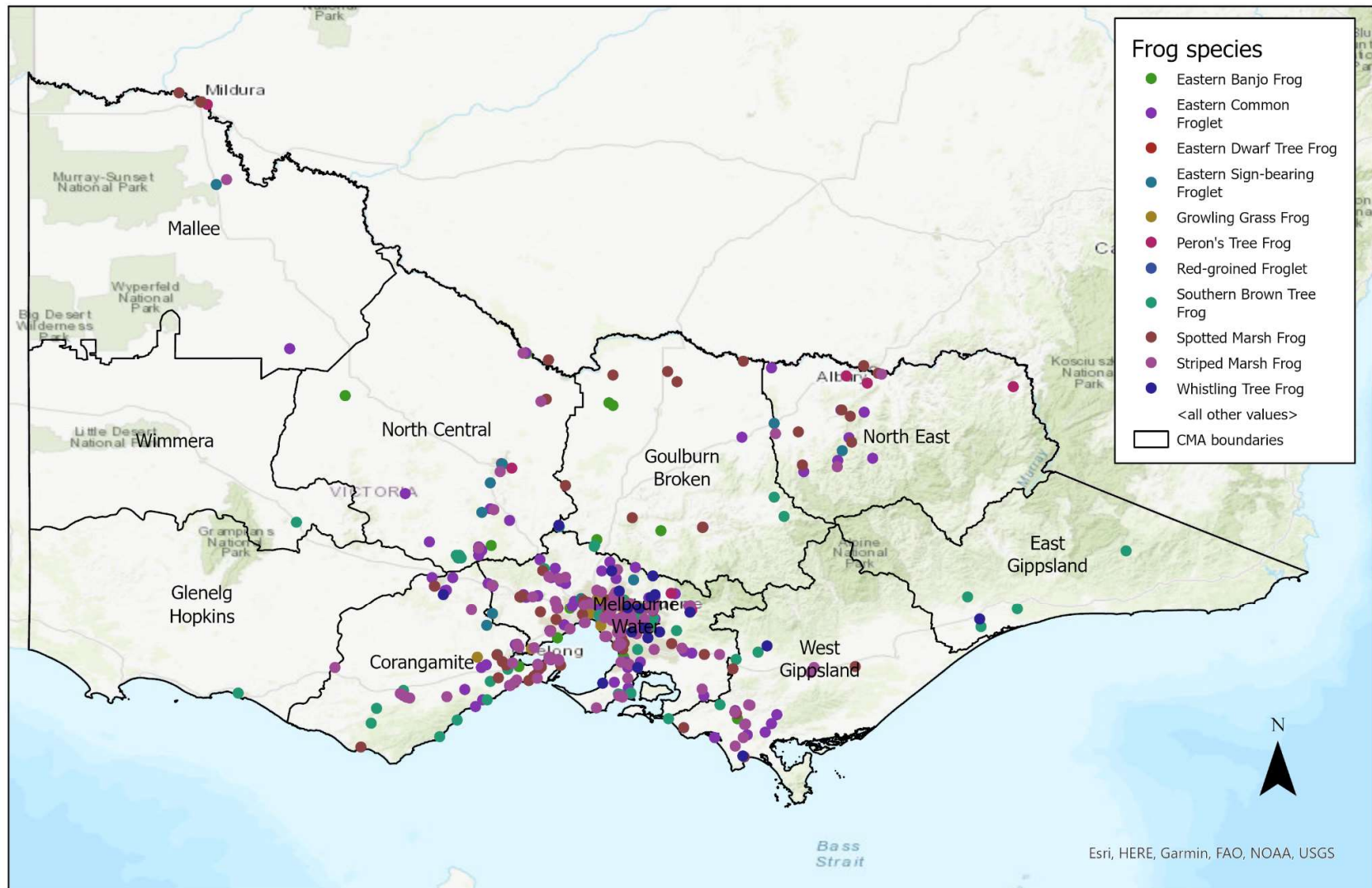


Figure 2. A map of Victoria showing the location of frog records submitted across Victoria during Frog Month Spring, October 2024.

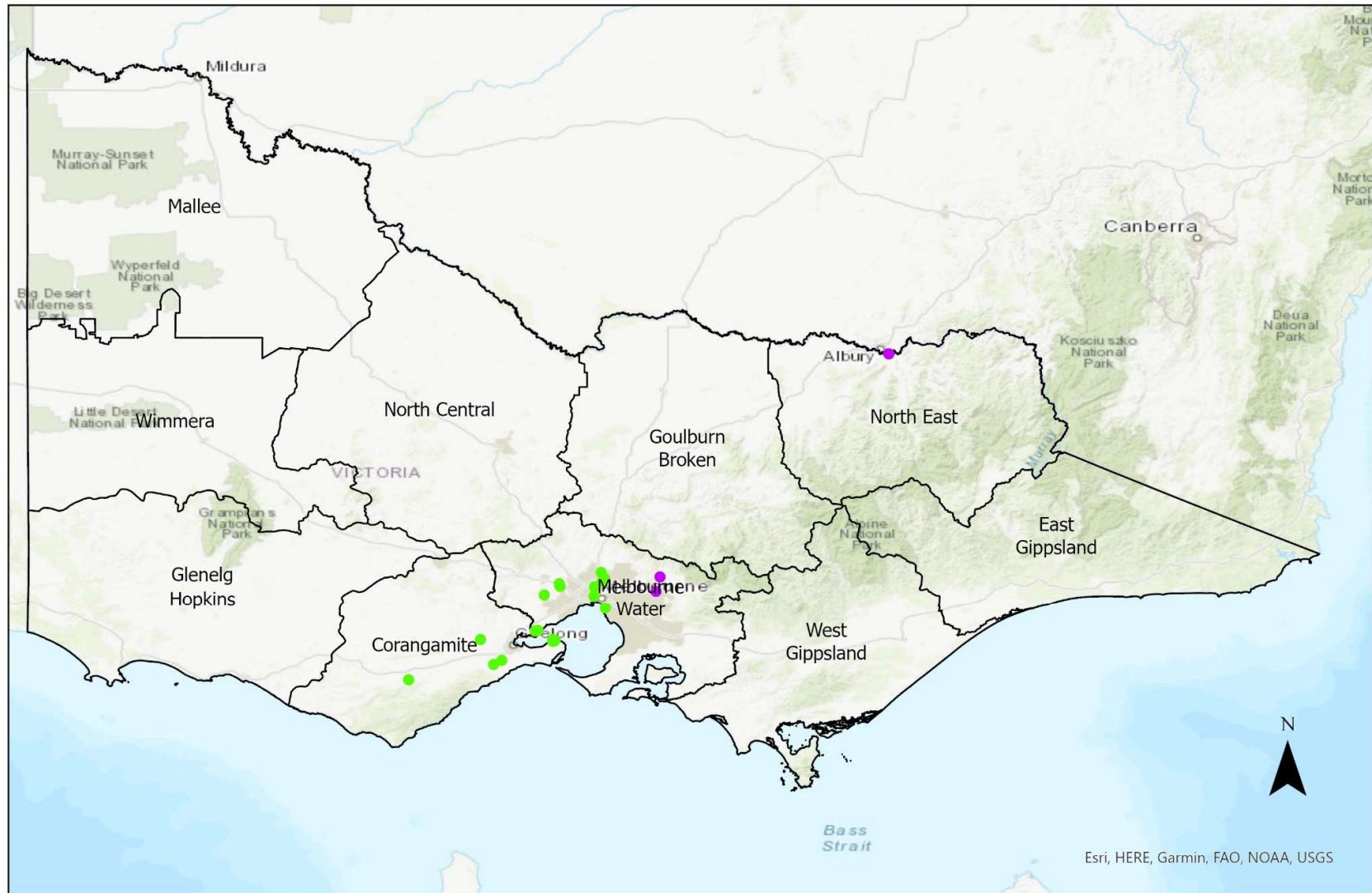


Figure 3. A map of Victoria showing records of the Growling Grass Frog (green) and the Eastern Dwarf Tree Frog (purple) from October 2024.

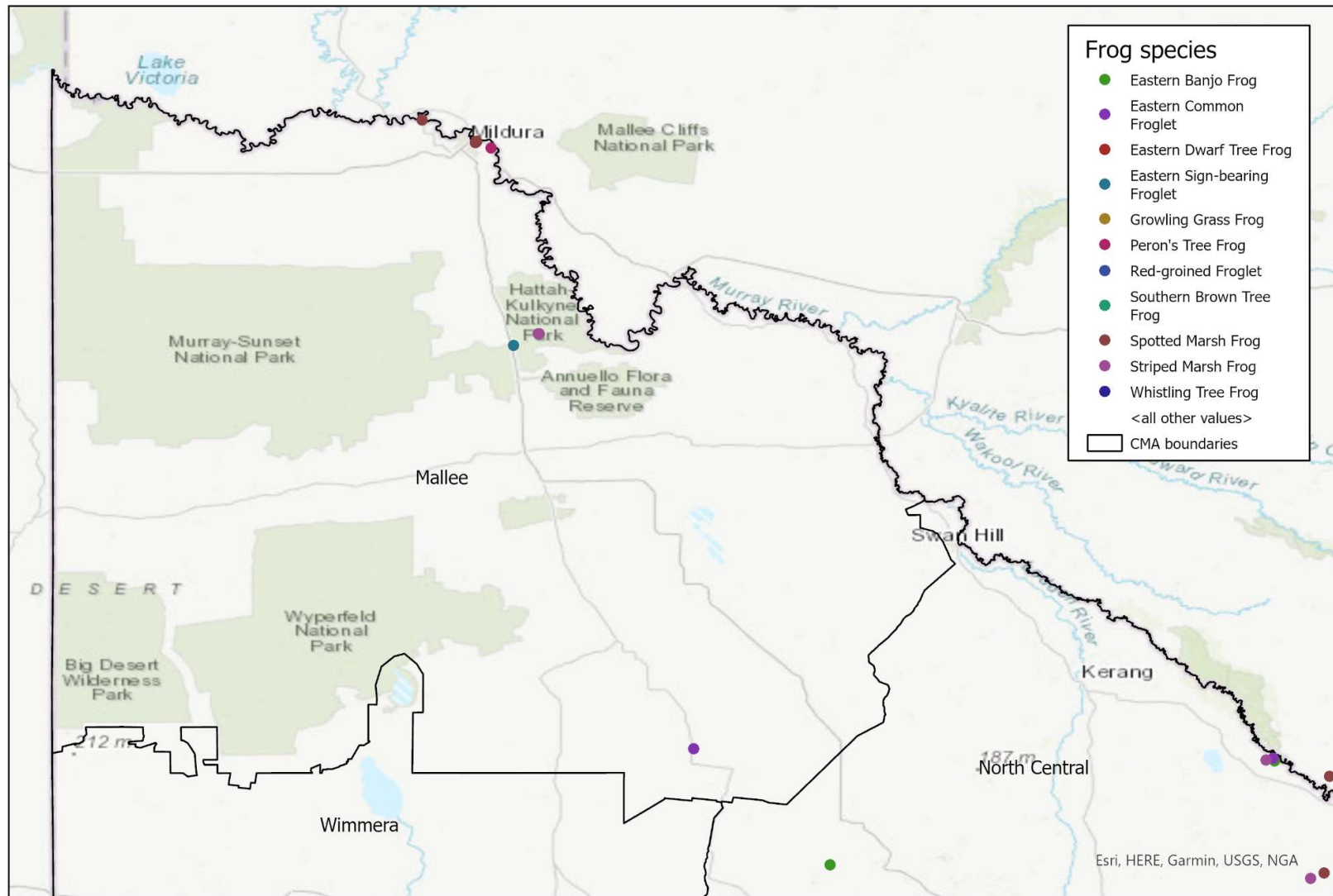


Figure 4. A map of the Mallee CMA showing the location of frog records submitted during Frog Month Spring, October 2024.

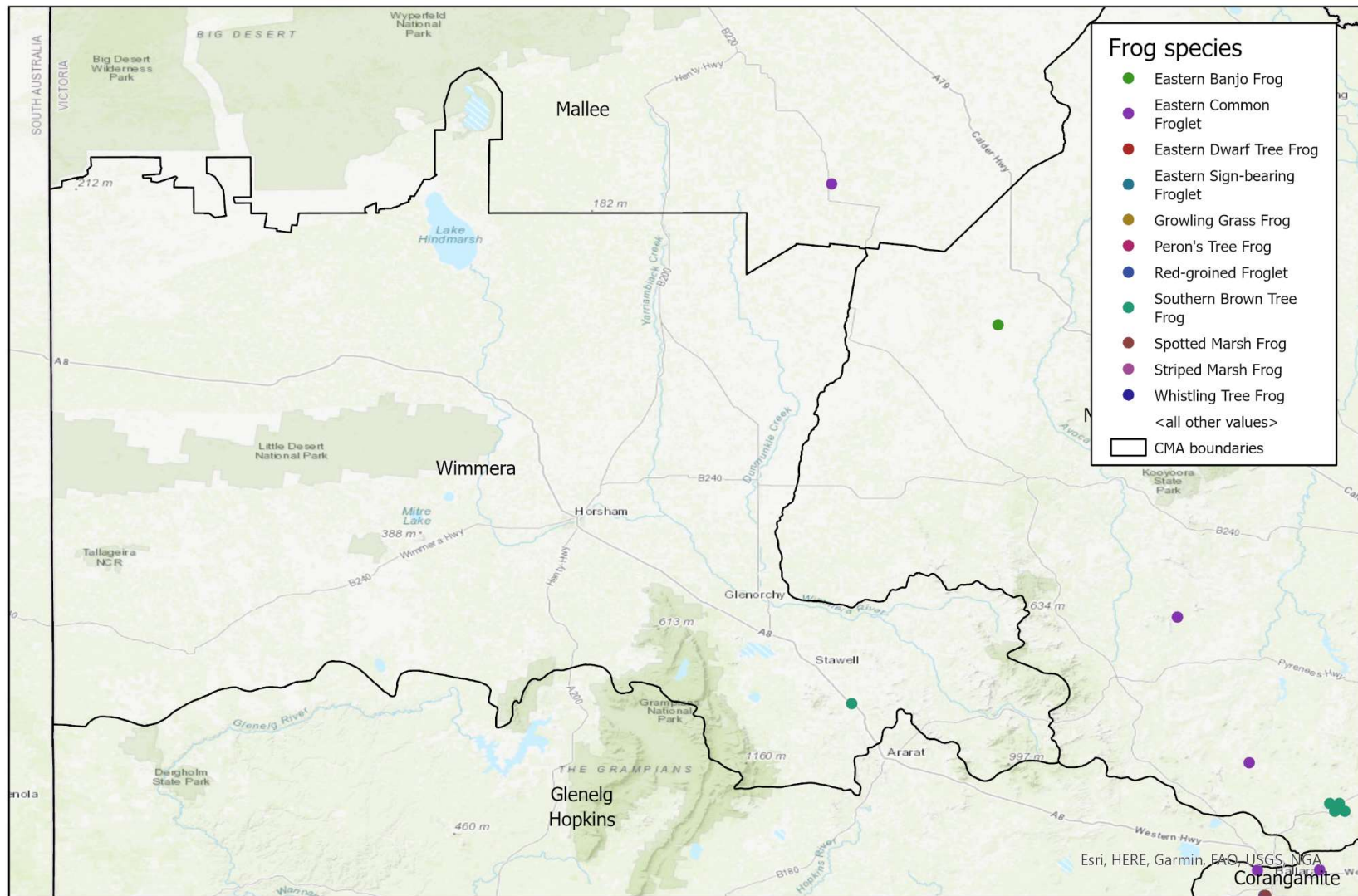


Figure 5. A map of the Wimmera CMA showing the location of frog records submitted during Frog Month Spring, October 2024.



Figure 6. A map of the Glenelg Hopkins CMA showing the location of frog records submitted during Frog Month Spring, October 2024.

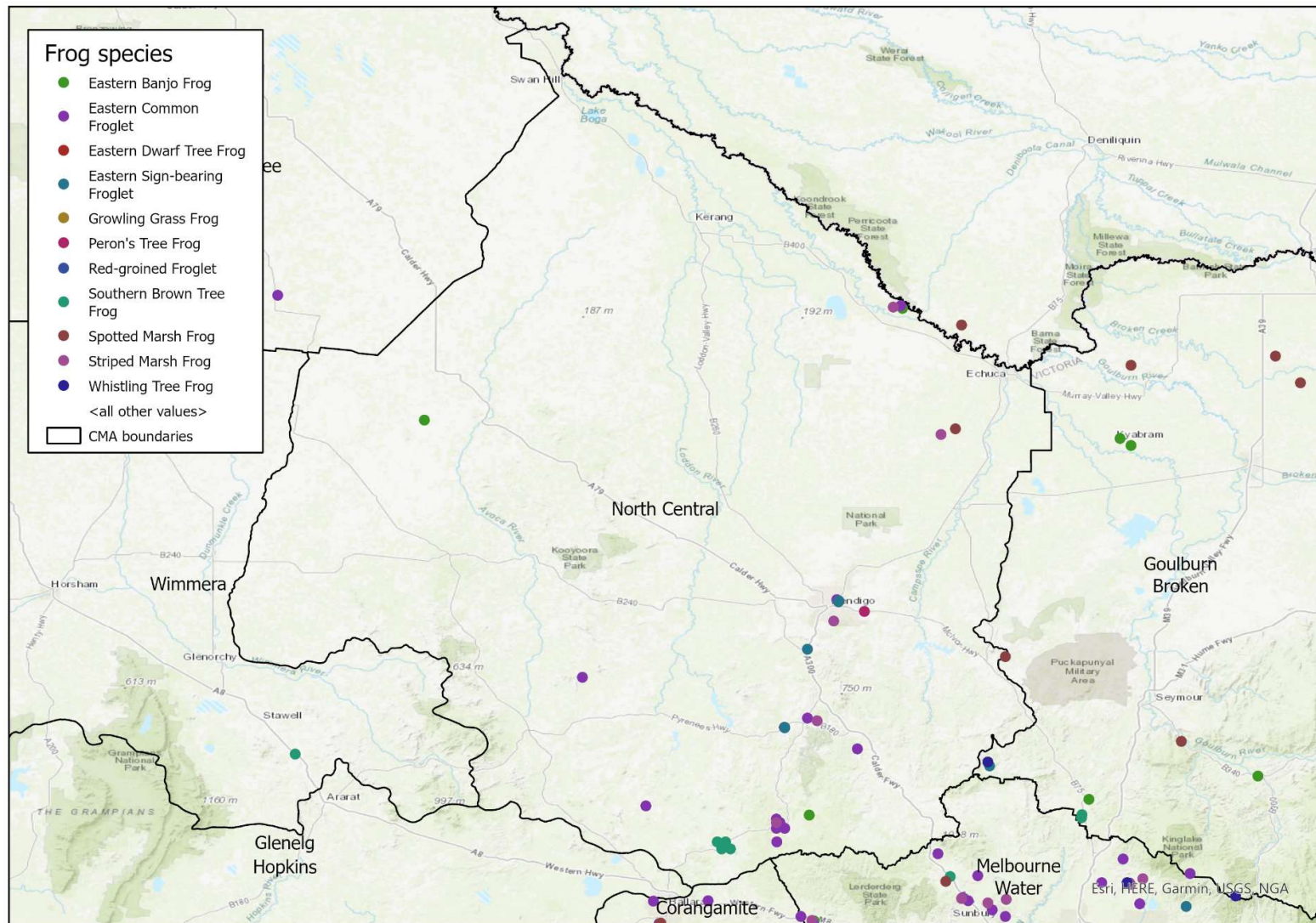


Figure 7. A map of the North Central CMA showing the location of frog records submitted during Frog Month Spring, October 2024.

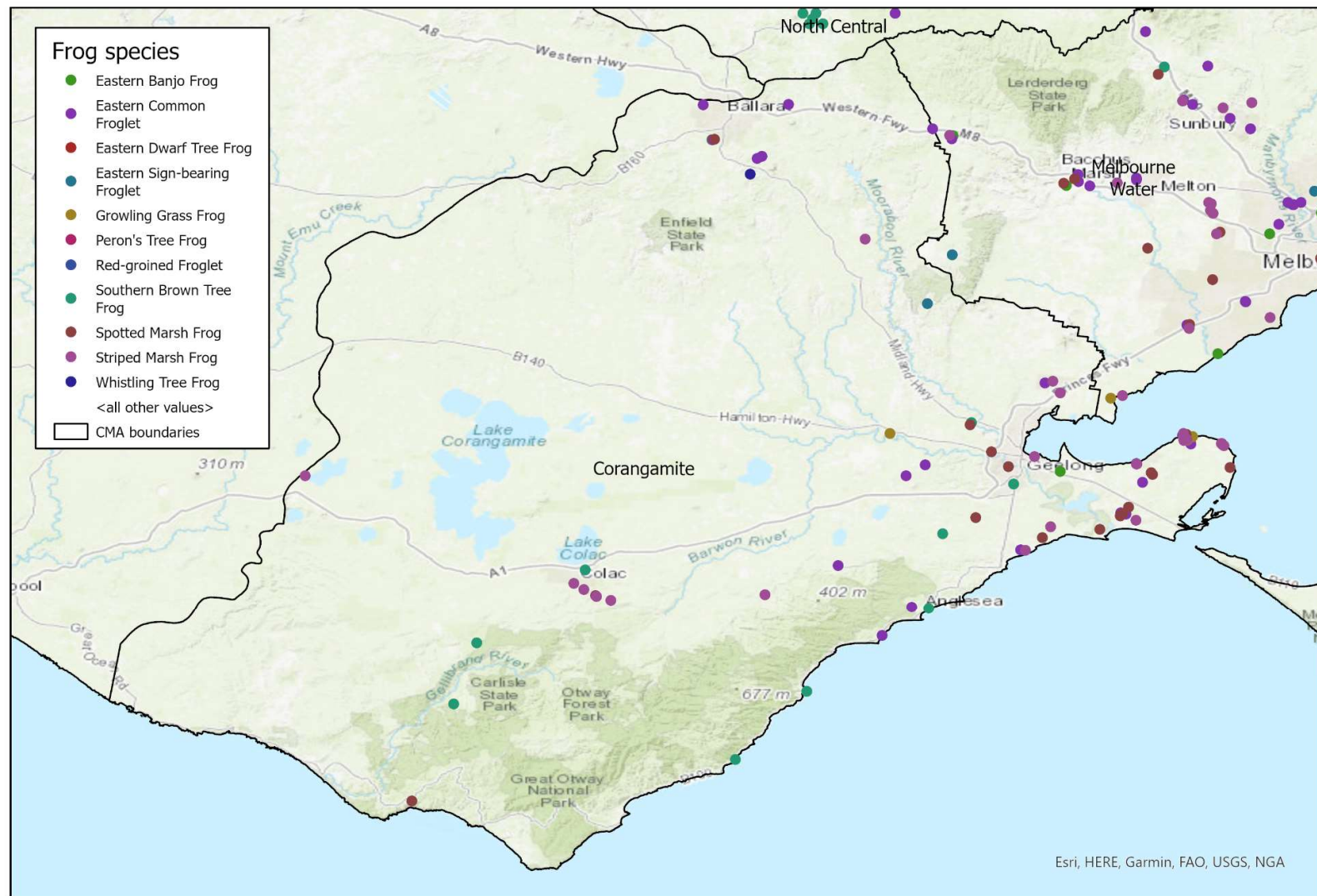


Figure 8. A map of the Corangamite CMA showing the location of frog records submitted during Frog Month Spring, October 2024.

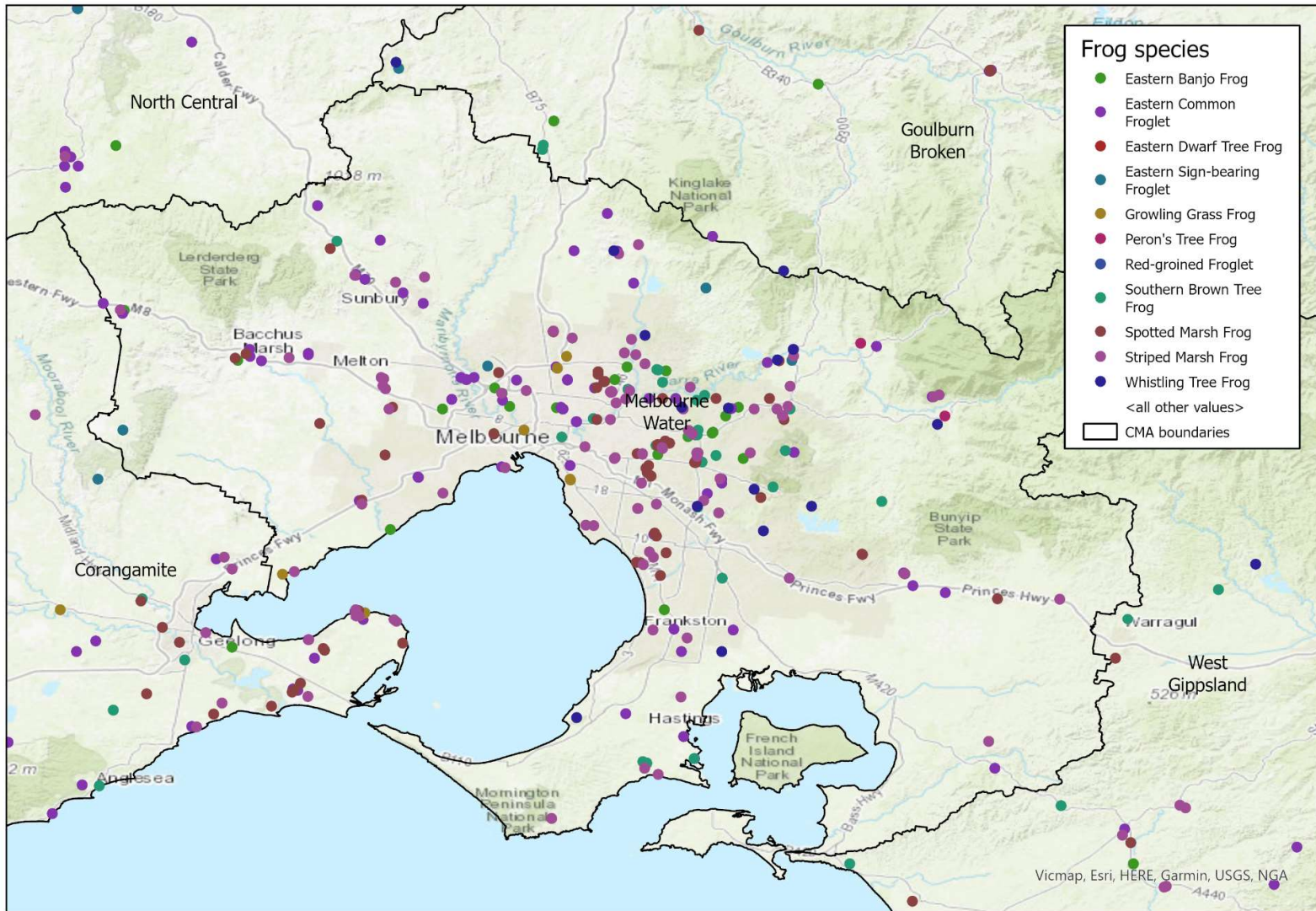


Figure 9. A map of the Melbourne Water region showing the location of frog records submitted during Frog Month Spring, October 2024.

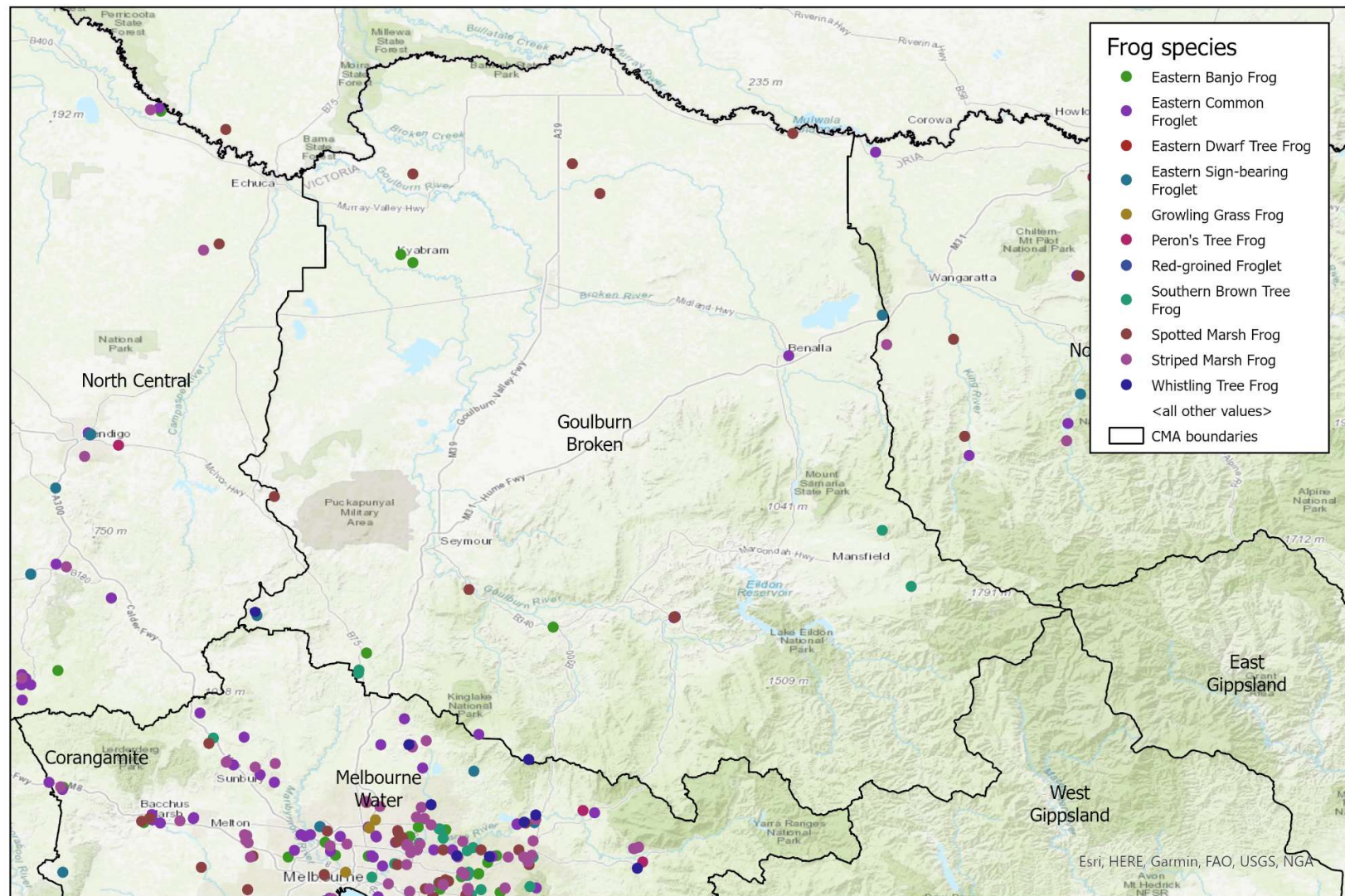


Figure 11. A map of the Goulburn Broken CMA showing the location of frog records submitted during Frog Month Spring, October 2024.

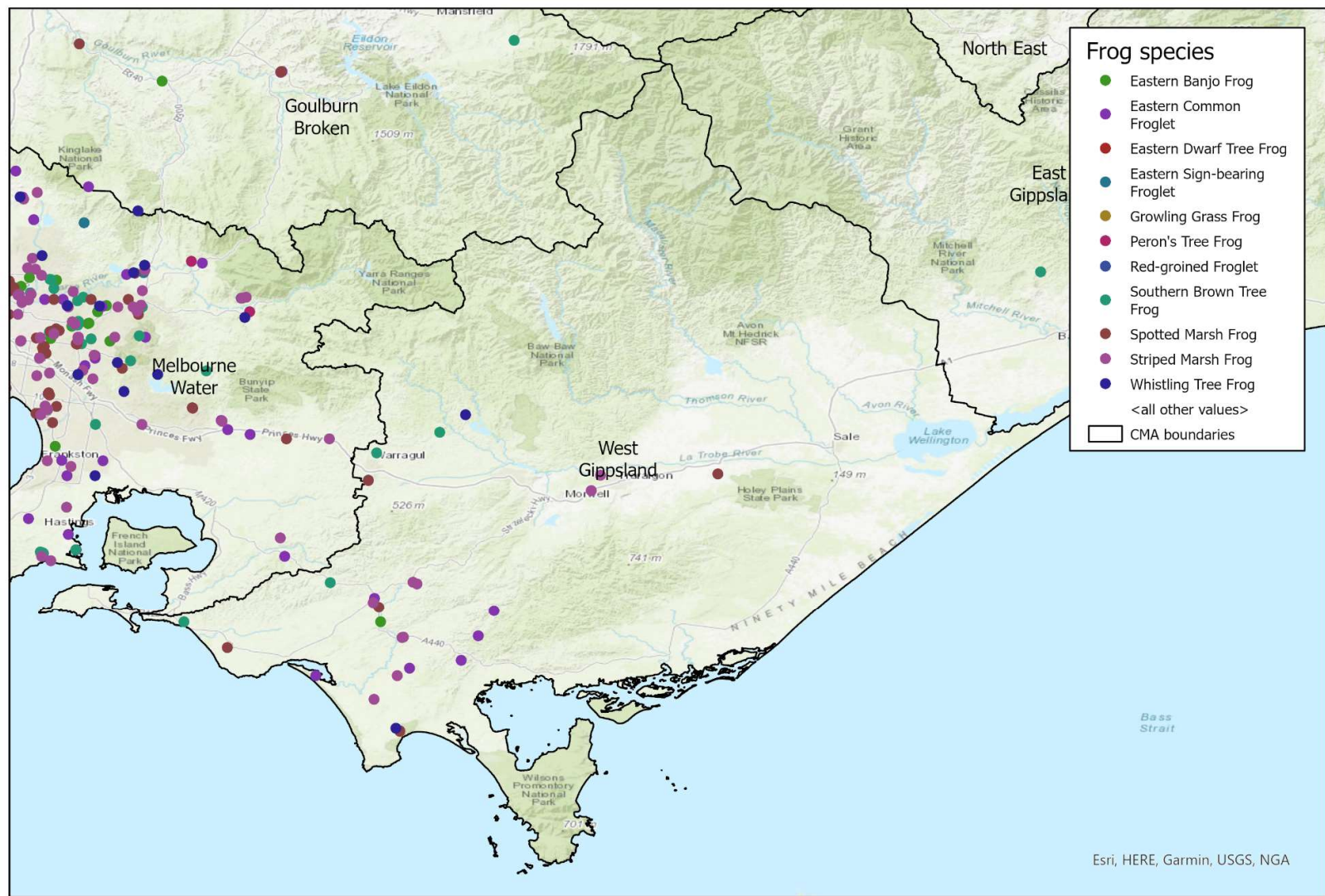


Figure 12. A map of the West Gippsland CMA showing the location of frog records submitted during Frog Month Spring, October 2024.

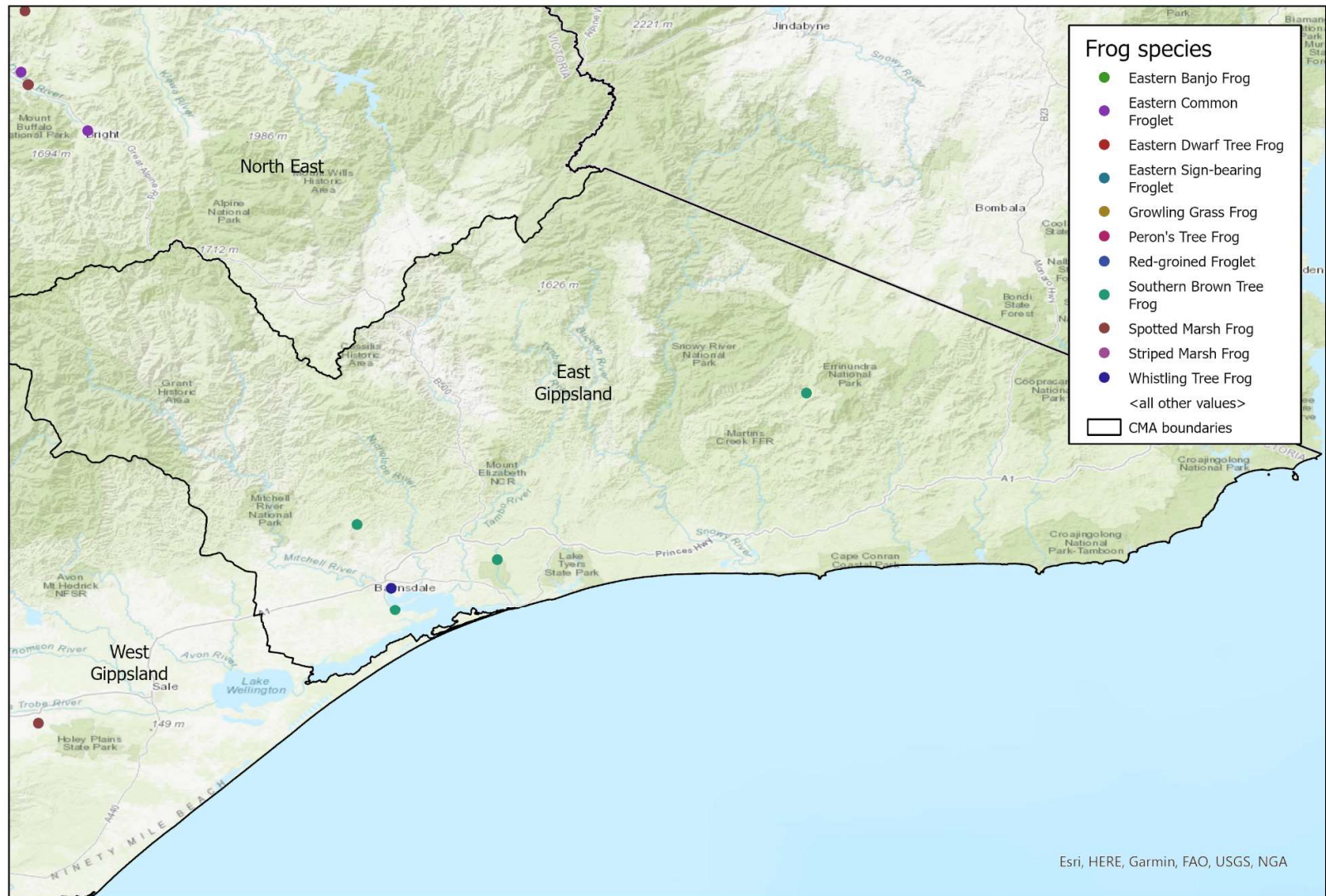


Figure 13. A map of the East Gippsland CMA showing the location of frog records submitted during Frog Month Spring, October 2024.