

Waterwatch

Water Quality Data Form

Site: ME-DYN002SOAK2

Date: 25/2/24

Monitoring group: Belinda, Egi, Robyn
 Gluzabeth, Natalie D

Time: 10:40

Persons monitoring:
 YWNA Waterwatch

Circumstantial Hazard or Additional Risks

Hazard:

Risk:

Risk Control Measures:

Safety Check

Has anything changed at your site recently?

Are there extreme weat conditions?

Any animals or insects nearby that pose a risk?



Parameter		Reading
Ammonium		0.0 mg / L
Dissolved Oxygen	(Use data portal to auto calculate % saturation)	6. mg / L
Water Temperature		18 °C
Air Temperature		23 °C
pH	<input checked="" type="checkbox"/> Calibrated	7.5 Unit
Electroconductivity	<input checked="" type="checkbox"/> Calibrated	1020 1020 µS / cm
Phosphate	(for colorimeter use conversion on data portal, or divide by 0.326 to calculate PO4-P mg/L)	2.2.0 → 2.0 mg / L

Good!

Note: Phosphate hard to determine due to murky & yellow sample.

Waterwatch

Parameter		Reading
Turbidity		53 NTU
Nitrate		mg / L

Comments: Water sample was very yellow & murky.
This made test readings difficult to determine.

Waterwatch

Observations

SOAK 2

Weather

Condition:

Sunny

Cloudy

Overcast

Raining

Windy

Rainfall

Last Rainfall:

More than a week ago

During the last week

During the last 24 hours

Raining now

Amount of rain (mm):

Water Flow

Flow Indicator (ML/Day):

Estimate of flow:

Flood / overbank

Bankfull

High

Medium

Low

Water Appearance

Clear

Stained brown

Stained green

Scummy

Muddy

Other: Loads of branches in water.

Smelly

Milky

Foamy / frothy

Oily

Stream Depth:

0-50cm

51cm - 99cm

1m - 2m

Other

Stream Width:

<2m

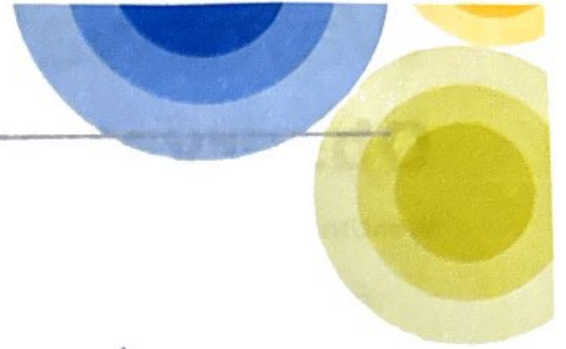
2 - 5m

>5m

Other

Drains

Waterwatch



Is water flowing from drain?

Colour

Odour

Litter Pollutants

Bottles

Plastic

Packets

Car bodies

Waxed cardboard

Petrol / diesel

Oil

Cans

Polystyrene

Paper

Clothing

Other:



Macro-invertebrates data form

Monitoring Group Information

Monitoring site details

Site code: **ME-DY002**
 Site description: **SOOK 2**

Name of monitoring group

Persons monitoring: **Sienna Cross, Dave Cross, Haney, Lonice, Julianne, Natalie**

Date and time of monitoring: **25/2/24**

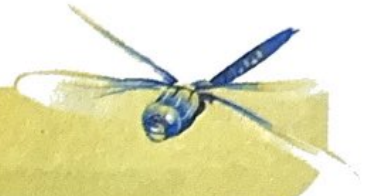
Macro-invertebrates

Sample Type

Edge Riffle

Please record your data below:

Common Name	Order	Bug Score	Abundance
Very Sensitive Macro-invertebrates			
Stonefly Nymph	Plecoptera	8	
Mayfly Nymph	Ephemeroptera	7	
Caddisfly Nymph	Trichoptera	7	20
Widely Tolerant Macro-invertebrates			
Toebiters/Dobsonflies	Megaloptera	6	
Damselfly Nymph	Odonata	6	15
Dragonfly Nymph	Odonata	6	1
Freshwater Mussel	Class: Bivalvia	5	
Aquatic Caterpillars	Lepidoptera	5	
Freshwater Shrimp/Prawn	Decapoda	5	
Freshwater Yabby/Crayfish	Decapoda	5	
Water Mite	Acarina	5	1
Freshwater Slater	Isopoda	5	



Macro-invertebrates data form

Common Name	Order	Bug Score	Abundance
Tolerant Macro-invertebrates			
Hydra	Hydrozoa	4	
Beetle Larvae	Coleoptera	4	
True Bugs (Backswimmers, Water Boatman, Water Strider)	Hemiptera	4	200
Side Swimmer/Scud	Amphipoda	4	
Aquatic Beetles (Diving Beetles, Whirligig Beetles)	Coleoptera	3	
Round Worms	Nematoda	3	
Leech	Hirudinea	3	1
Freshwater Snails	Gastropoda	3	
Flatworm	Turbellaria	3	
Very Tolerant Macro-invertebrates			
Mosquito Larvae	Diptera	2	
Biting Midge Larvae	Diptera	2	
Fly Larvae	Diptera	2	
Segmented Worm	Oligochaeta	1	
Non Biting Midge (Bloodworms)	Diptera	1	2
TOTALS			

Overall Bug Rating

- Very good
 Good
 Fair
 Poor

