

## Physical and Chemical Analysis Data Form

### Waterwatch Melbourne Physical and Chemical Analysis

#### Monitoring site details

Site code:

YDA558

Site description:

Dog Ford - Darebin Parklands Alphington

#### Name of monitoring group

Persons monitoring:

Peter Grenfell

Date and time of monitoring:

9.10am 15/12/22

#### Please record your data below:

Parameter	Reading	Comments
Air Temperature	15.9 °C	
Water Temperature	14.5 °C	
Turbidity	27 NTU	
pH	7.8 Unit	
Conductivity	364 µS / cm	
Dissolved Oxygen	8 mg / L	% Saturation
Phosphate <small>(If using Lamotte Smart2 Colorimeter multiply by 0.326 to calculate mg/L)</small>	0.03 mg / L	
Ammonium	0.02 mg / L	
Nitrate	mg / L	

#### Observations and Notes:

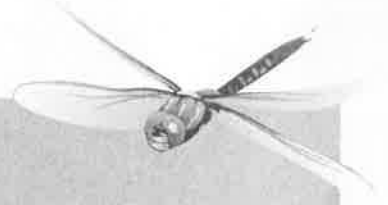
What has changed since last time you monitored?

creek up due to rainfall over last four days

What stands out about the site today? A bit turbid as a result

Fish trapping/surveying taking place recently v/s from fish ladder

Other observations: which is v/s of our site.



## Physical and Chemical Analysis Data Form

### Waterway Information

#### Rate of flow:

- Very fast     Fast     Normal base flow     Slow     Trickle  
 None     Permanent     Temporary     Other

If 'Other', please specify:

#### Type of flow:

- Rising     Steady     Falling     Peak     Dry     Pools / Puddles     Other

If 'Other', please specify:

#### Waterway Appearance:

- Clear     Muddy     Smelly     Frothy     Scummy  
 Oily     Discoloured     Milky     Stained brown     Other

If 'Other', please specify:

**Waterway depth:** 40 cm (0 to 3000cm)

**Waterway width:** 8m cm (0 to 100m)

#### Weather:

- Sunny     Cloudy     Overcast     Showers     Rain  
 Hail     Windy     Foggy     Other

If 'Other', please specify:

#### Last rainfall:

- Raining now     Last 24hrs     Last 3 days     Last 7 days     More than a week ago

#### Litter / Pollutants:

- Cans     Paper     Clothing     Oil (m<sup>2</sup>)  
 Food Packets     Plastic     Polystyrene     Car bodies  
 Waxed Cardboard     Bottles     Petrol/Diesel (m<sup>2</sup>)     Other

If 'Other', please specify: