

Waterwatch

Water Quality Data Form

DEL
Chain of Ponds
28/08

Site: ~~DEL500~~ Chain of Ponds, DEL?
ME_DYWOOD2
Monitoring group: Natalie Davey
Persons monitoring: Glen, Sanja, Geoffrey, Julianne, Rob, Alison, Jill

Date: 28/08/2022

Time:

Circumstantial Hazard or Additional Risks

Hazard:

Risk:


Risk Control Measures:

Safety Check

Has anything changed at your site recently?

Are there extreme heat conditions?

Any animals or insects nearby that pose a risk?



Parameter		Reading	
Ammonium		0.07	mg / L
Dissolved Oxygen	(Use data portal to auto calculate % saturation)	4.0	mg / L
Water Temperature		15	°C
Air Temperature		17.1	°C
pH	<input checked="" type="checkbox"/> Calibrated	7.2	Unit
Electroconductivity	<input checked="" type="checkbox"/> Calibrated	600	µS / cm
Phosphate	(for colorimeter use conversion on data portal, or divide by 0.326 to calculate PO4-P mg/L)	0.15	mg / L

Waterwatch

152-00 29/8/27
Chain of Ponds

Parameter	Reading	
Turbidity	< 30	NTU
Nitrate		mg / L

Comments:

>

POND

2

Waterwatch Observations

Clear of
Ponds
~~DEC - 500~~
28/8/20

Weather

Condition:

Sunny

Raining

Cloudy

Windy

Overcast



Rainfall

Last Rainfall:

More than a week ago

During the last 24 hours

During the last week

Raining now

Amount of rain (mm):

Water Flow

Flow Indicator (ML/Day):

Estimate of flow:

Flood / overbank

Medium

Bankfull

Low

High

Water Appearance

Clear

Scummy

Smelly

Foamy / frothy

Stained brown

Muddy

Milky

Oily

Stained green

Other:

Stream Depth:

0-50cm

51cm - 99cm

1m - 2m

Other

Stream Width:

<2m

2 - 5m

>5m

Other

Drains

PBND

3

Waterwatch

Chamber of Pools
DEL-300
28/8/22



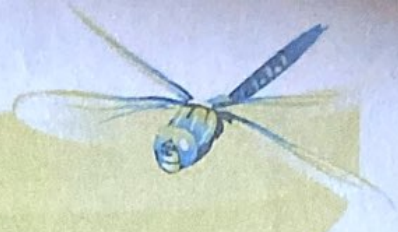
Is water flowing from drain?

Colour
Odour

Litter Pollutants

- Bottles
- Car bodies
- Oil
- Paper
- Plastic
- Waxed cardboard
- Cans
- Clothing
- Packets
- Petrol / diesel
- Polystyrene

Other:



Macro-invertebrates data form

Monitoring Group Information

Monitoring site details

Site code:
 Site description:
 Name of monitoring group:
 Persons monitoring:
 Date and time of monitoring:

Soak / Chain of Ponds
 Geoffrey, Sanja, Ali
 11 AM 28/8/2022

Macro-invertebrates

Sample Type

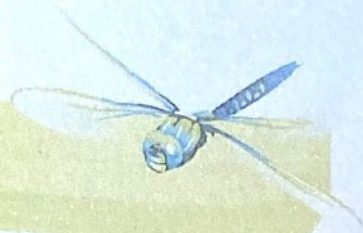
Edge Riffle

Please record your data below:

Common Name	Order	Bug Score	Abundance
Very Sensitive Macro-invertebrates			
Stonefly Nymph	Plecoptera	8	
Mayfly Nymph	Ephemeroptera	7	
Caddisfly Nymph	Trichoptera	7	2
Very Sensitive Macro-invertebrates			
Toe-biters/Dobsonflies	Megaloptera	6	
Damselfly Nymph	Odonata	6	
Dragonfly Nymph	Odonata	6	
Freshwater Mussel	Class: Bivalvia	5	
Aquatic Caterpillars	Lepidoptera	5	
Freshwater Shrimp/Prawn	Decapoda	5	
Freshwater Yabby/Crayfish	Decapoda	5	
Water Mite	Acarina	5	none
Freshwater Slater	Isopoda	5	

Waterwatch Program

Macro-invertebrates data form



Common Name	Order	Bug Score	Abundance
Tolerant Macro-invertebrates			
Hydra	Hydrozoa	4	
Beetle Larvae	Coleoptera	4	2
True Bugs (Backswimmers, Water Boatman, Water Strider)	Hemiptera	4	5
Side Swimmer/Scud	Amphipoda	4	
Aquatic Beetles (Diving Beetles, Whirligig Beetles)	Coleoptera	3	
Round Worms	Nematoda	3	
Leech	Hirudinea	3	1
Freshwater Snails	Gastropoda	3	1
Flatworm	Turbellaria	3	
Very Tolerant Macro-invertebrates			
Mosquito Larvae	Diptera	2	
Biting Midge Larvae	Diptera	2	
Fly Larvae	Diptera	2	
Segmented Worm	Oligochaeta	1	
Non Biting Midge (Bloodworms)	Diptera	1	
	TOTALS		

Overall Bug Rating

- Very good
 Good
 Fair
 Poor

