



## Physical and Chemical Analysis Data Form

### Waterwatch Melbourne Physical and Chemical Analysis

#### Monitoring site details

Site code: RESERVOIR FROGS

Site description: Edgars Creek, south of wetlands and Leamington St bridge, north of Edward's Lake.

#### Name of monitoring group

Persons monitoring: TERRY + PATREA + KATE

Date and time of monitoring: 11:00am 14-03-21

#### Please record your data below:

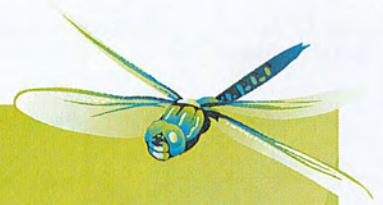
Parameter	Reading	Unit	Comments
Air Temperature	14.6	°C	
Water Temperature	16.3	°C	
Turbidity	20	NTU	
pH	6.6	Unit	
Conductivity	388	µS / cm	Laava
Dissolved Oxygen	7	mg / L	75 % Saturation
Phosphate <small>(If using Lamotte Smart2 Colorimeter multiply by 0.326 to calculate mg/L)</small>	0.07	mg / L	
Ammonium	0.07	mg / L	COLOUR OF SAMPLE IS MUCH YELLOW THAN GREEN.
Nitrate		mg / L	

#### Observations and Notes:

What has changed since last time you monitored?

What stands out about the site today?

Other observations:



## Physical and Chemical Analysis Data Form

### Waterway Information

#### Rate of flow:

- Very fast     Fast     Normal base flow     Slow     Trickle  
 None     Permanent     Temporary     Other

If 'Other', please specify:

#### Type of flow:

- Rising     Steady     Falling     Peak     Dry     Pools / Puddles     Other

If 'Other', please specify:

#### Waterway Appearance:

- Clear     Muddy     Smelly     Frothy     Scummy  
 Oily     Discoloured     Milky     Stained brown     Other

If 'Other', please specify:

Waterway depth: \_\_\_\_\_ cm (0 to 3000cm)

Waterway width: 76.5 cm (0 to 100m)

#### Weather:

- Sunny     Cloudy     Overcast     Showers     Rain  
 Hail     Windy     Foggy     Other

If 'Other', please specify:

#### Last rainfall:

- Raining now     Last 24hrs     Last 3 days     Last 7 days     More than a week ago

#### Litter / Pollutants:

- Cans     Paper     Clothing     Oil (m<sup>2</sup>)  
 Food Packets     Plastic     Polystyrene     Car bodies  
 Waxed Cardboard     Bottles     Petrol/Diesel (m<sup>2</sup>)     Other

If 'Other', please specify: