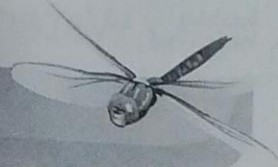


Macro-invertebrates Data Form



Monitoring Group Information

Monitoring site details

Site code: 0106 *Pebbledank point*

Site description:

Name of monitoring group

Persons monitoring: *BLS Susan W, Tina, Wira, John S, Anne & Elaine*

Date and time of monitoring: *4-11-18 10:00am*

Macro-invertebrates

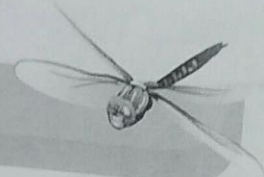
Sample Type

Edge Riffle

Please record your data below:

Common Name	Order	Bug Score	Abundance
Very Sensitive Macro-invertebrates			
Stonefly Nymph	Plecoptera	8	
Mayfly Nymph	Ephemeroptera	7	
Caddisfly Nymph	Trichoptera	7	
Sensitive Macro-invertebrates			
Toe-biters/Dobsonflies	Megaloptera	6	
Damselfly Nymph	Odonata	6	1
Dragonfly Nymph	Odonata	6	
Freshwater Mussel	Class: Bivalvia	5	
Aquatic Caterpillars	Lepidoptera	5	
Freshwater Shrimp/Prawn	Decapoda	5	
Freshwater Yabby/Crayfish	Decapoda	5	
Water Mite	Acarina	5	
Freshwater Slater	Isopoda	5	

Macro-invertebrates Data Form



Common Name	Order	Bug Score	Abundance
Tolerant Macro-invertebrates			
Hydra	Hydrozoa	4	
Beetle Larvae	Coleoptera	4	
True Bugs (Backswimmers, Water Boatman, Water Strider)	Hemiptera	4	
Side Swimmer/Scud	Amphipoda	4	
Aquatic Beetles (Diving Beetles, Whirligig Beetles)	Coleoptera	3	
Round Worms	Nematoda	3	
Leech	Hirudinea	3	
Freshwater Snails	Gastropoda	3	11
Flatworm	Turbellaria	3	
Very Tolerant Macro-invertebrates			
Mosquito Larvae	Diptera	2	
Biting Midge Larvae	Diptera	2	
Fly Larvae	Diptera	2	
Segmented Worm	Oligochaeta	1	
Non Biting Midge (Bloodworms)	Diptera	1	2
	TOTALS		

Overall Bug Rating

Total abundance	Total bug score	
	0-200	0-35
200+	Poor	Good
	Fair	Very good