

Physical and Chemical Analysis Data Form

Waterwatch Melbourne Physical and Chemical Analysis

Monitoring site details

Site code: ME_MJA750

Site description: Jacksons Creek

Name of monitoring group *Sonbury Landcare Assoc*

Persons monitoring: *Marilyn Fiedler*

Date and time of monitoring: *4:30pm. 20/5/18*

Please record your data below:

Parameter	Reading	Unit	Comments
Air Temperature	<i>14</i>	° C	
Water Temperature	<i>12</i>	° C	
Turbidity	<i>30</i>	NTU	
pH	<i>7.3</i>	Unit	
Conductivity	<i>610</i>	µ S / cm	
Dissolved Oxygen	<i>6</i>	mg / L	% Saturation
Phosphate <small>(If using Lamotte Smart2 Colorimeter multiply by 0.326 to calculate mg/L)</small>	<i>0.15</i>	mg / L	
Ammonium	<i>0.07</i>	mg / L	
Nitrate	<i>N/A.</i>	mg / L	

Observations and Notes:

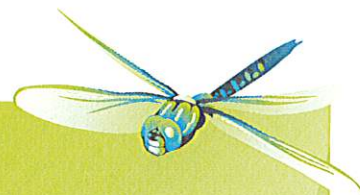
What has changed since last time you monitored?

Water volume increased. Rate of flow increased due to recent rain. Water muddy.

What stands out about the site today?

Vegetation much greener.

Other observations:



Physical and Chemical Analysis Data Form

Waterway Information

Rate of flow:

- Very fast Fast Normal base flow Slow Trickle
 None Permanent Temporary Other

If 'Other', please specify:

Type of flow:

- Rising Steady Falling Peak Dry Pools / Puddles Other

If 'Other', please specify:

Waterway Appearance:

- Clear Muddy Smelly Frothy Scummy
 Oily Discoloured Milky Stained brown Other

If 'Other', please specify:

Waterway depth: _____ cm (0 to 3000cm)

Waterway width: _____ cm (0 to 100m)

Weather:

- Sunny Cloudy Overcast Showers Rain
 Hail Windy Foggy Other

If 'Other', please specify:

Last rainfall:

- Raining now Last 24hrs Last 3 days Last 7 days More than a week ago

Litter / Pollutants:

- Cans Paper Clothing Oil (m²)
 Food Packets Plastic Polystyrene Car bodies
 Waxed Cardboard Bottles Petrol/Diesel (m²) Other

If 'Other', please specify:
